



**WE ARE SUCH A  
HAPPY STATE!  
IGNORANCE IS BLISS!**

*Reflections from the  
Louisiana Survey*



# ABOUT THE LOUISIANA SURVEY

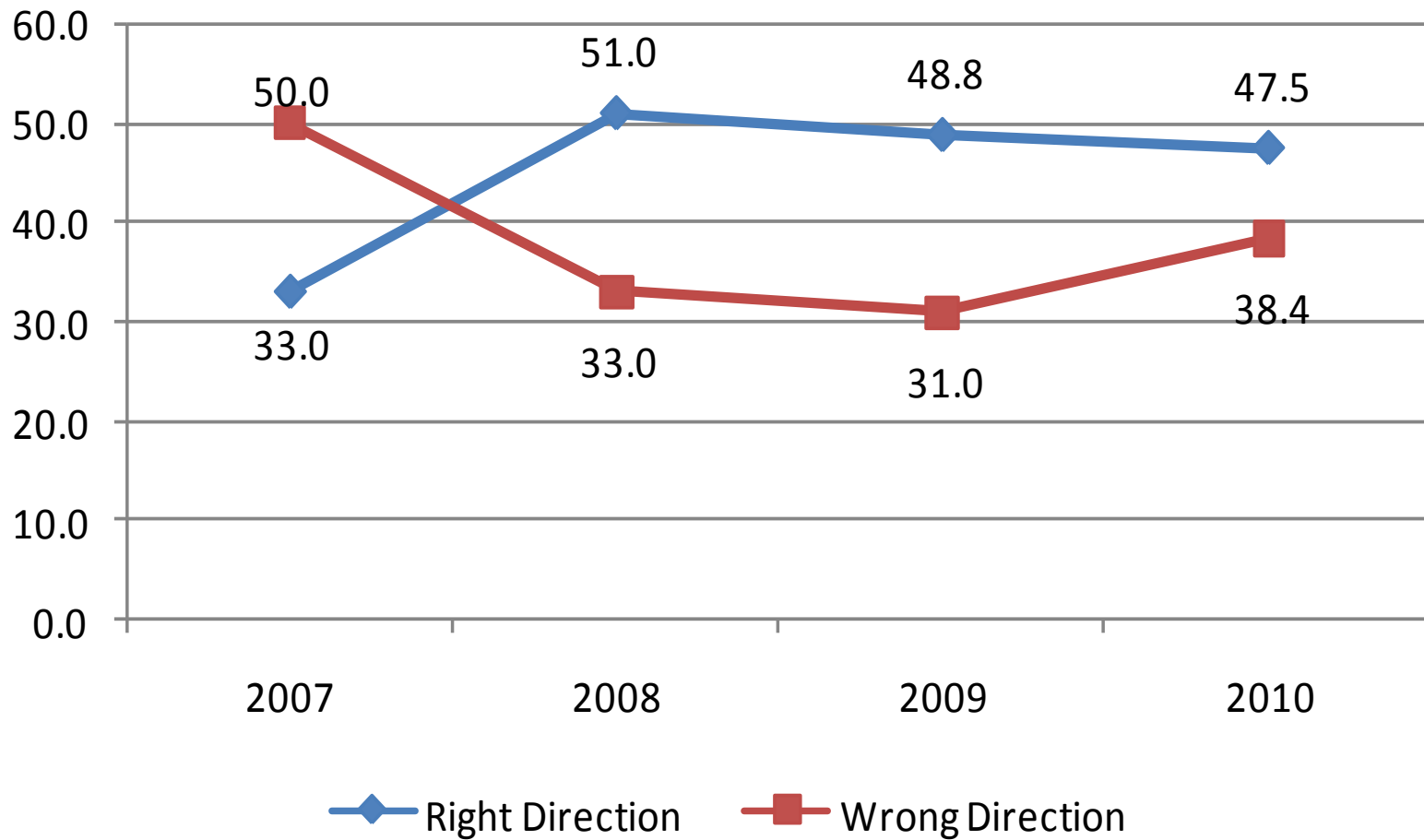
- ◉ Barometer of Louisiana public opinion, 2002-2010
- ◉ Beginning in 2009, dual frame sampling of landline and cell phone populations
- ◉ Each survey includes 800-1,000 respondents
- ◉ The 2009 Louisiana Survey is based 913 total respondents including 510 landline telephone interviews and 403 cell phone interviews (+/- 3.2 margin of error, +/- 4.3 on landline)
- ◉ Weighted to reflect current population estimates from the American Community Survey and based on NHIS estimates of telephone use.

# MAJOR THEMES

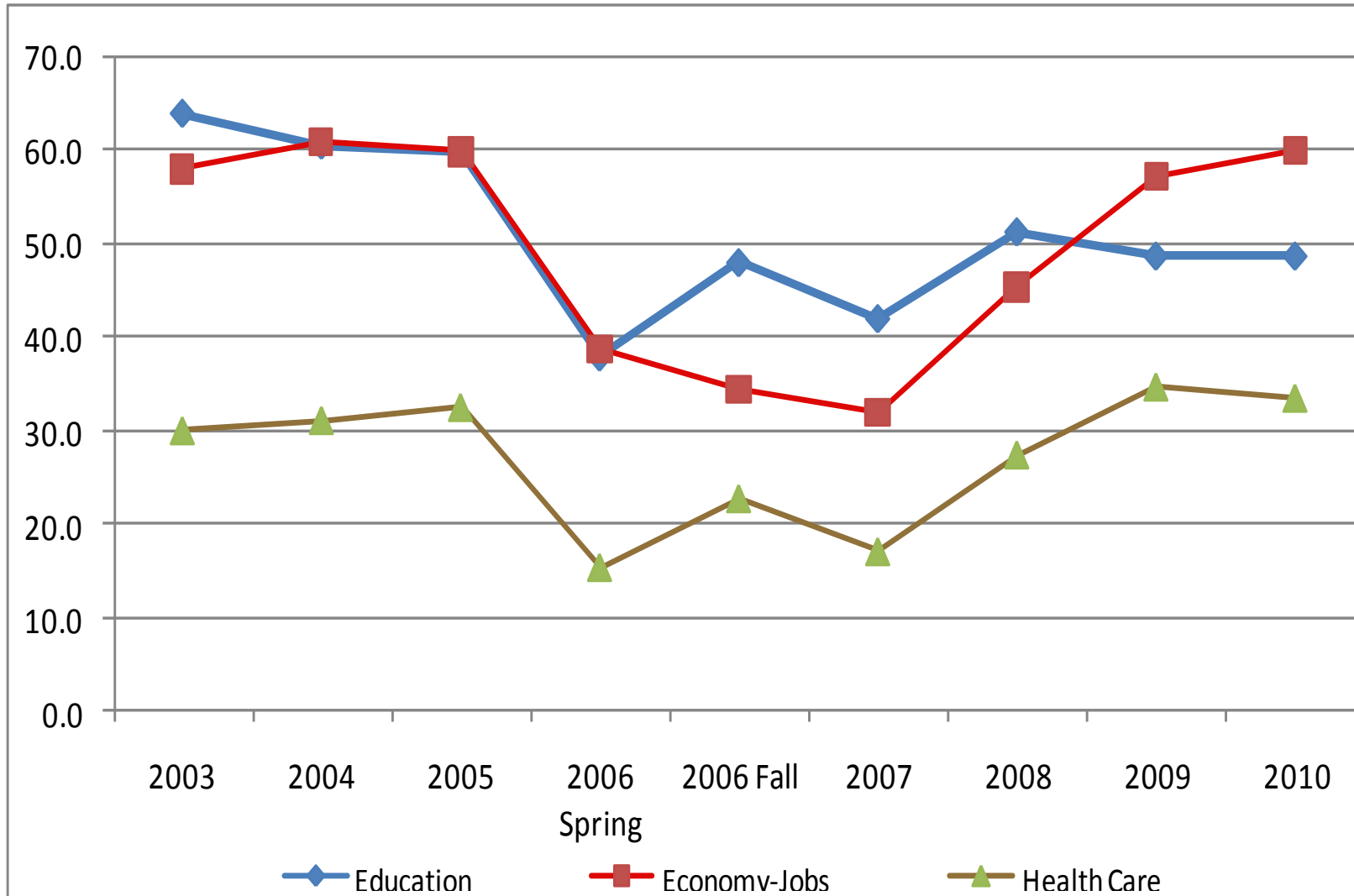
- The Context of Disaster: A New Era of Louisiana Politics
  - Hurricanes Katrina & Rita
  - The Gulf Oil Spill
- The Budgetary Cliff and the Limits of Democracy (and Polling)
  - Taxes, Spending, and Strategic Investment
  - Repealing Stelly
- Public Opinion - Uninformed and Apathetic?
  - Who knows the unemployment rate?
  - Mobilizing Change

**RIGHT DIRECTION &  
CONFIDENCE IN  
STATE GOVERNMENT**

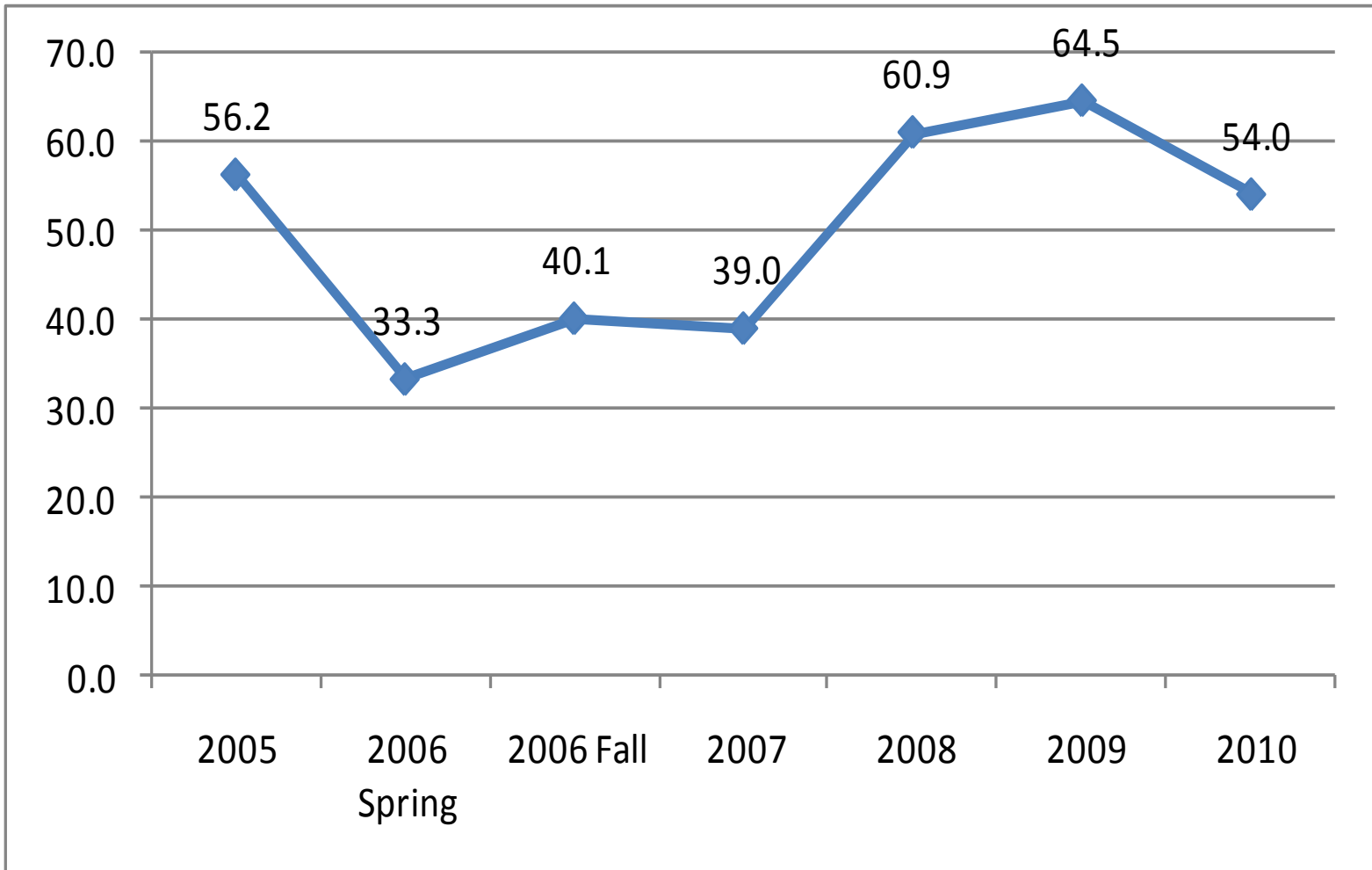
# PERCENT OF LOUISIANA RESIDENTS SAYING THE STATE IS HEADED IN THE RIGHT AND WRONG DIRECTION, 2007-2010



# IDENTIFICATION OF THE MOST IMPORTANT PROBLEMS CONFRONTING THE STATE, 2003-2010

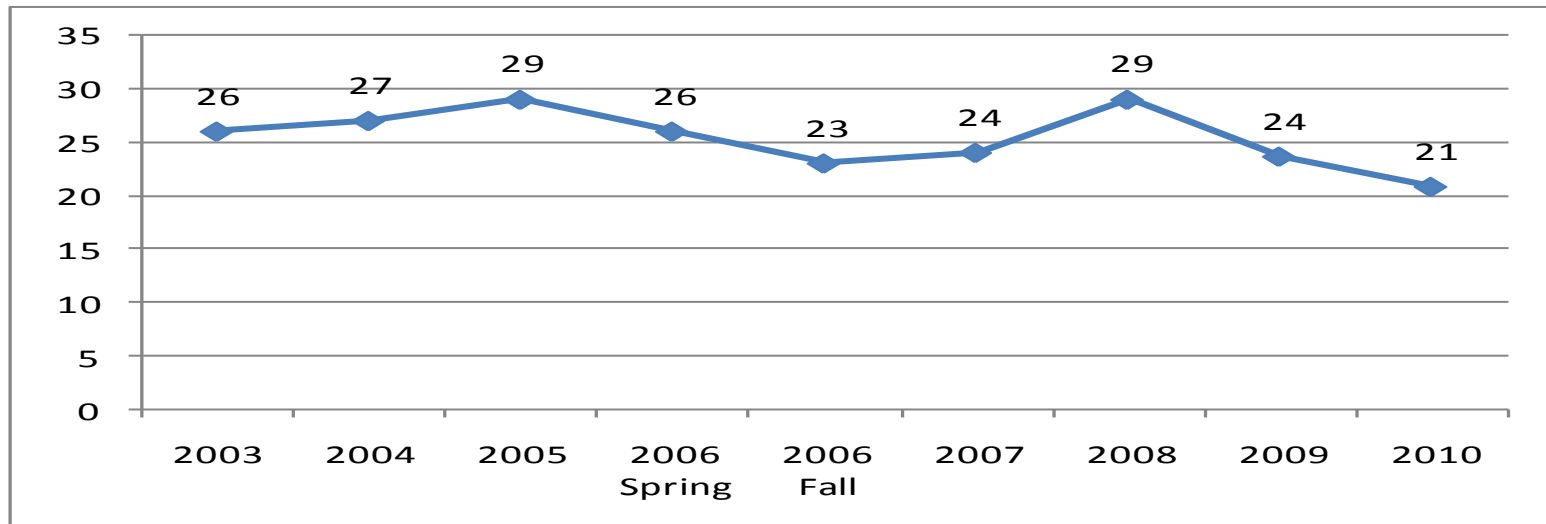
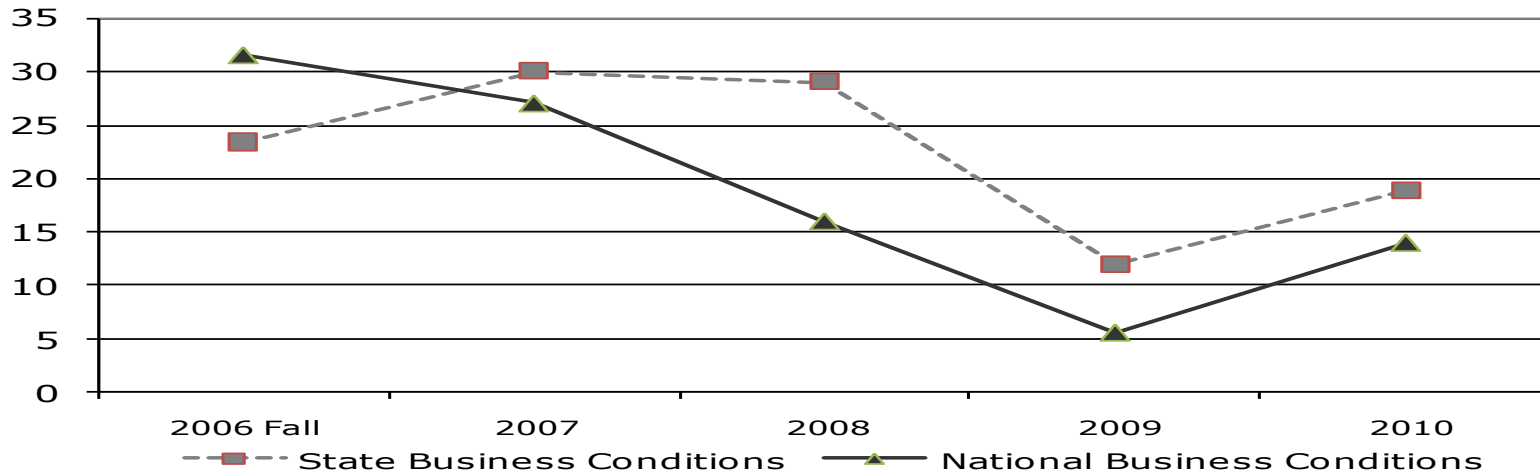


# PERCENT VERY OR SOMEWHAT CONFIDENT STATE GOVERNMENT WILL EFFECTIVELY ADDRESS MOST IMPORTANT PROBLEM

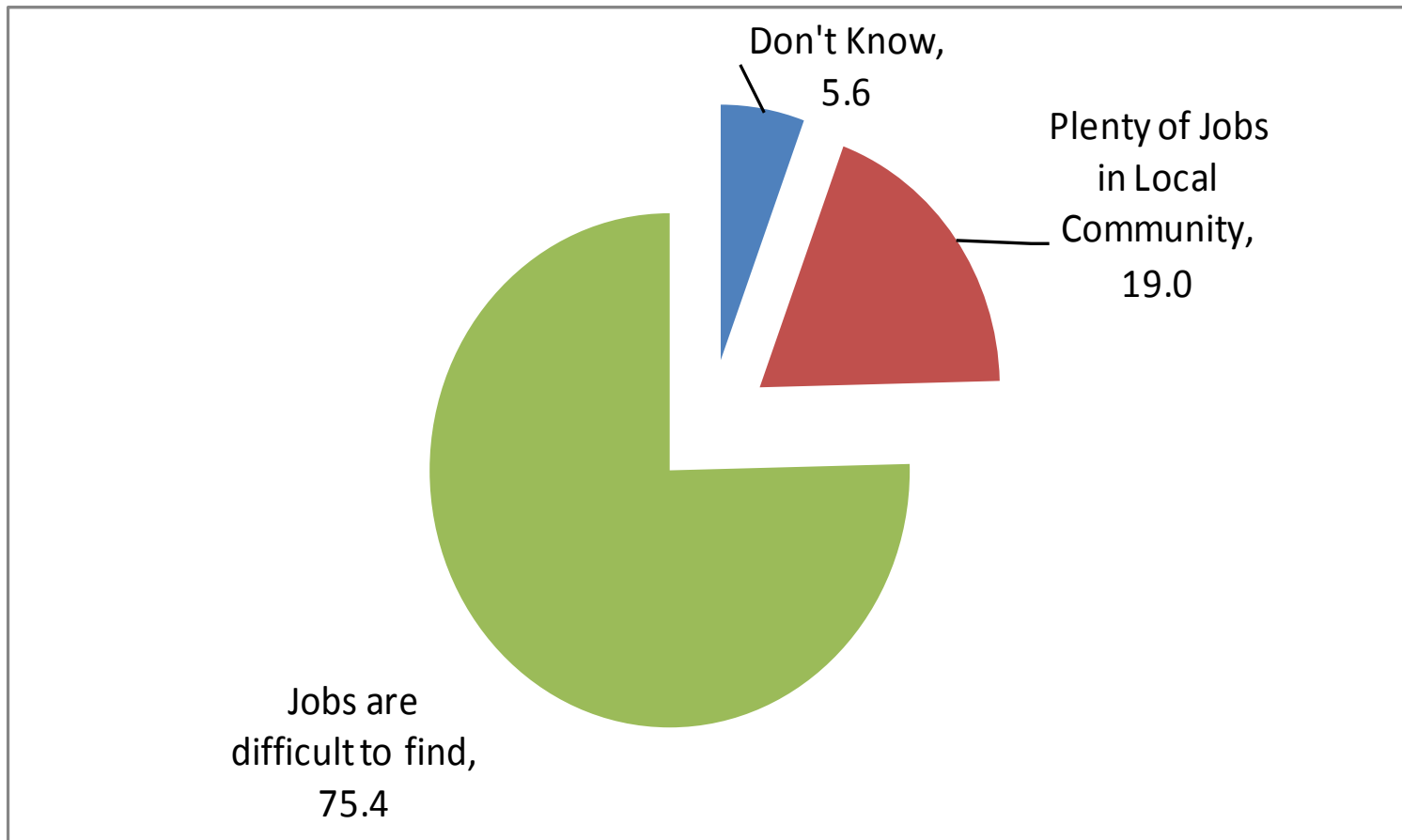


# THE ECONOMY, UNEMPLOYMENT AND JOBS

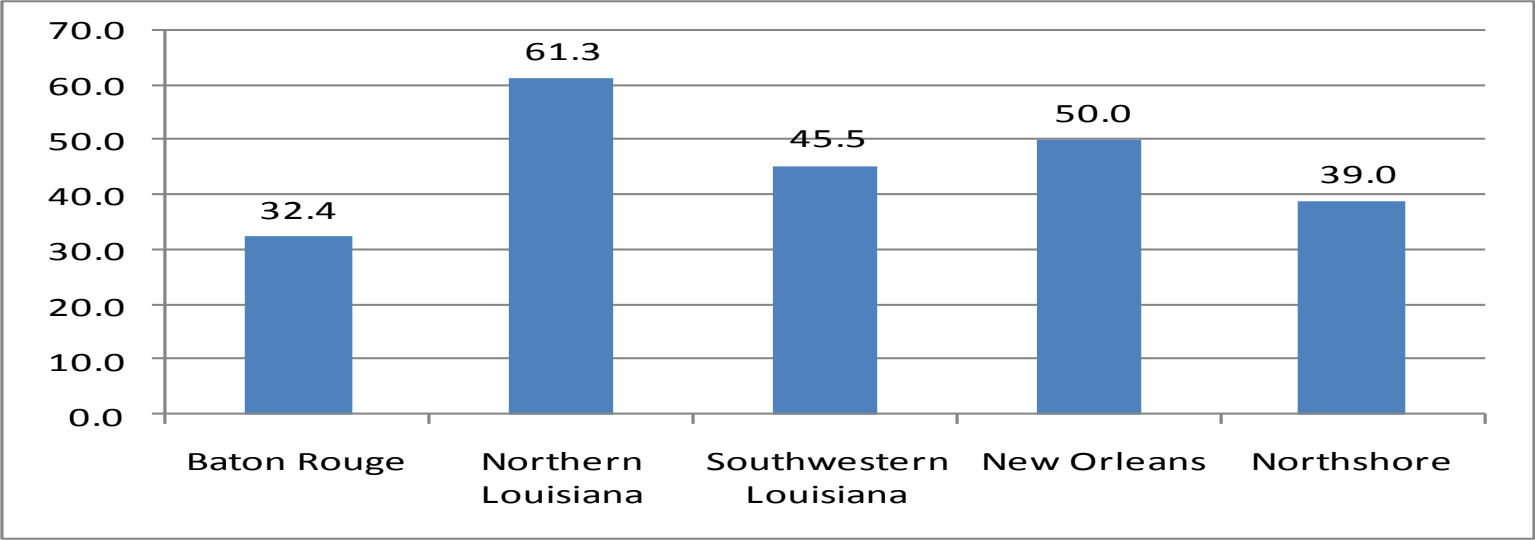
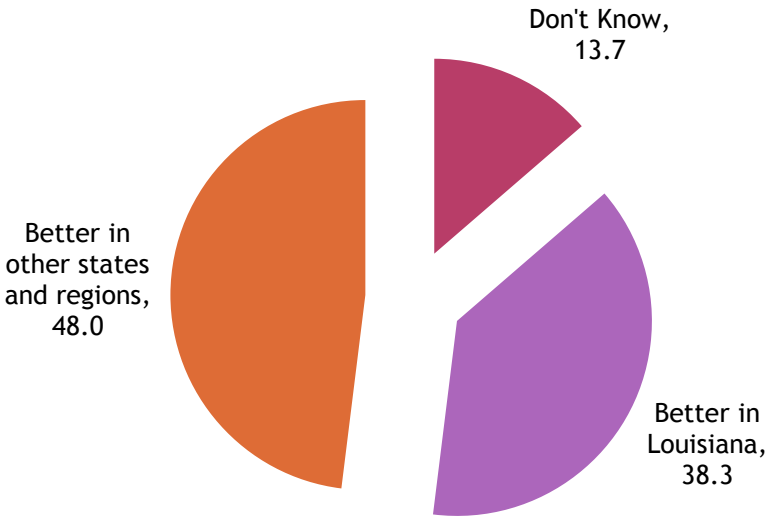
# PERCENT SAYING STATE BUSINESS CONDITIONS, NATIONAL BUSINESS CONDITIONS, AND PERSONAL FINANCES HAVE GOTTEN BETTER OVER THE PAST YEAR, 2006-2010



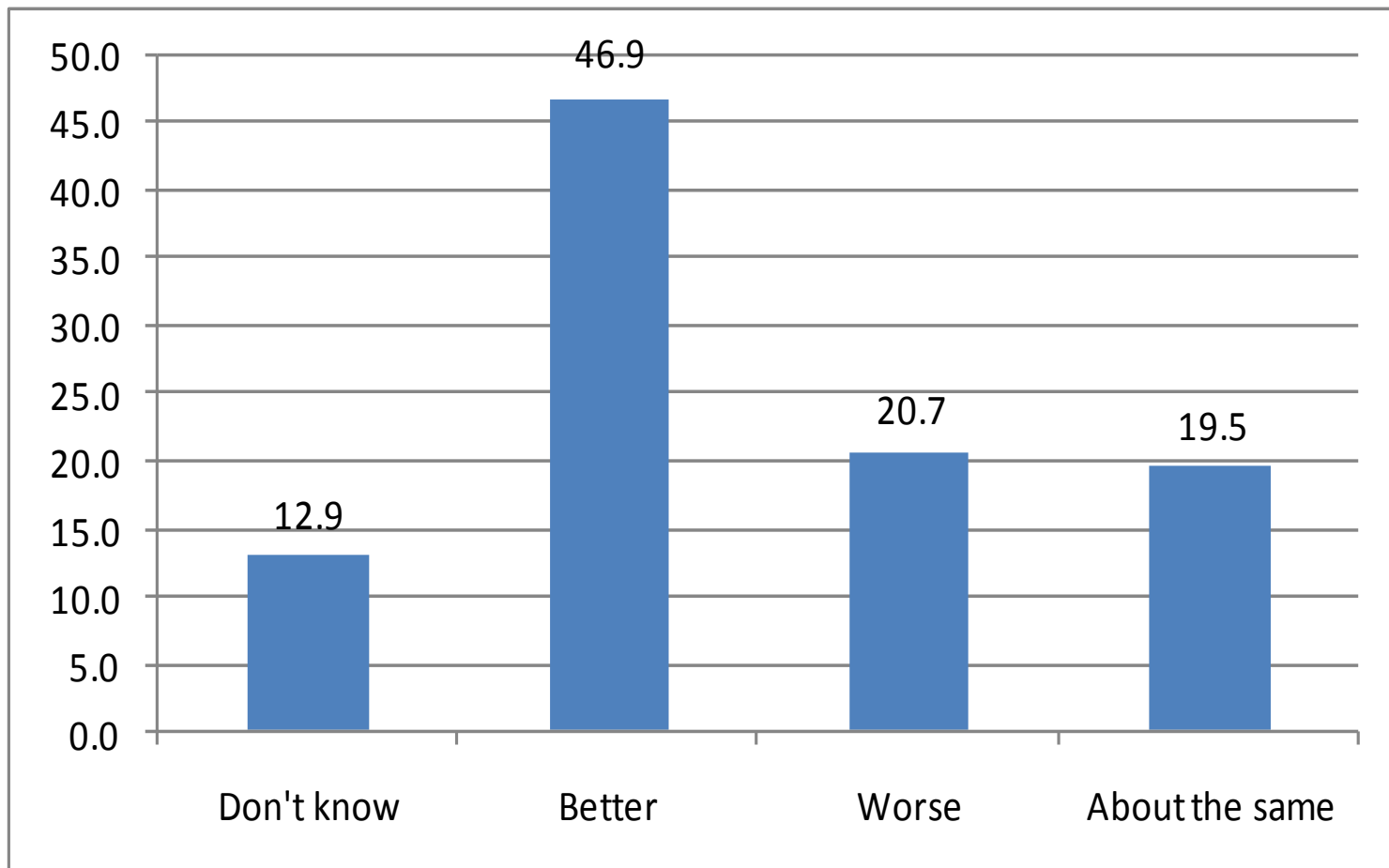
# PERCEPTIONS OF THE AVAILABILITY OF JOBS IN THE LOCAL COMMUNITY



# PERCEPTION JOB OPPORTUNITIES ARE BETTER IN OTHER STATES AND REGIONS BY REGION

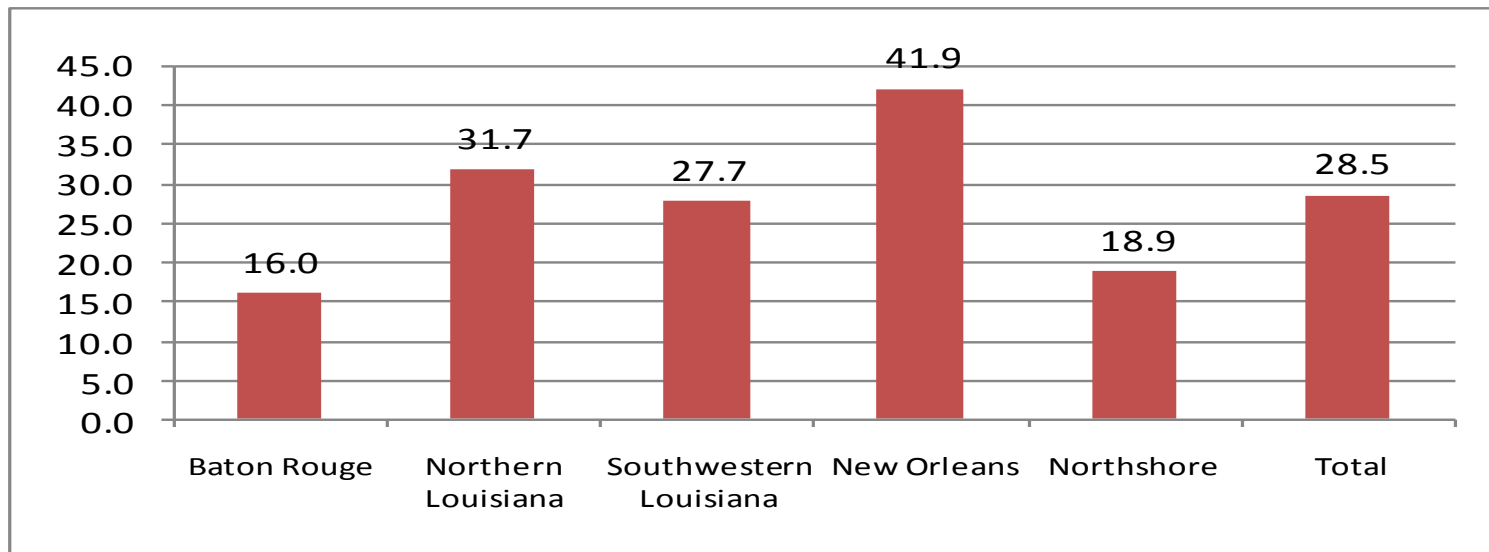


# PERCENT OF RESPONDENTS WHO PERCEIVE LOUISIANA UNEMPLOYMENT AS BETTER, WORSE, OR ABOUT THE SAME AS THE NATIONAL UNEMPLOYMENT





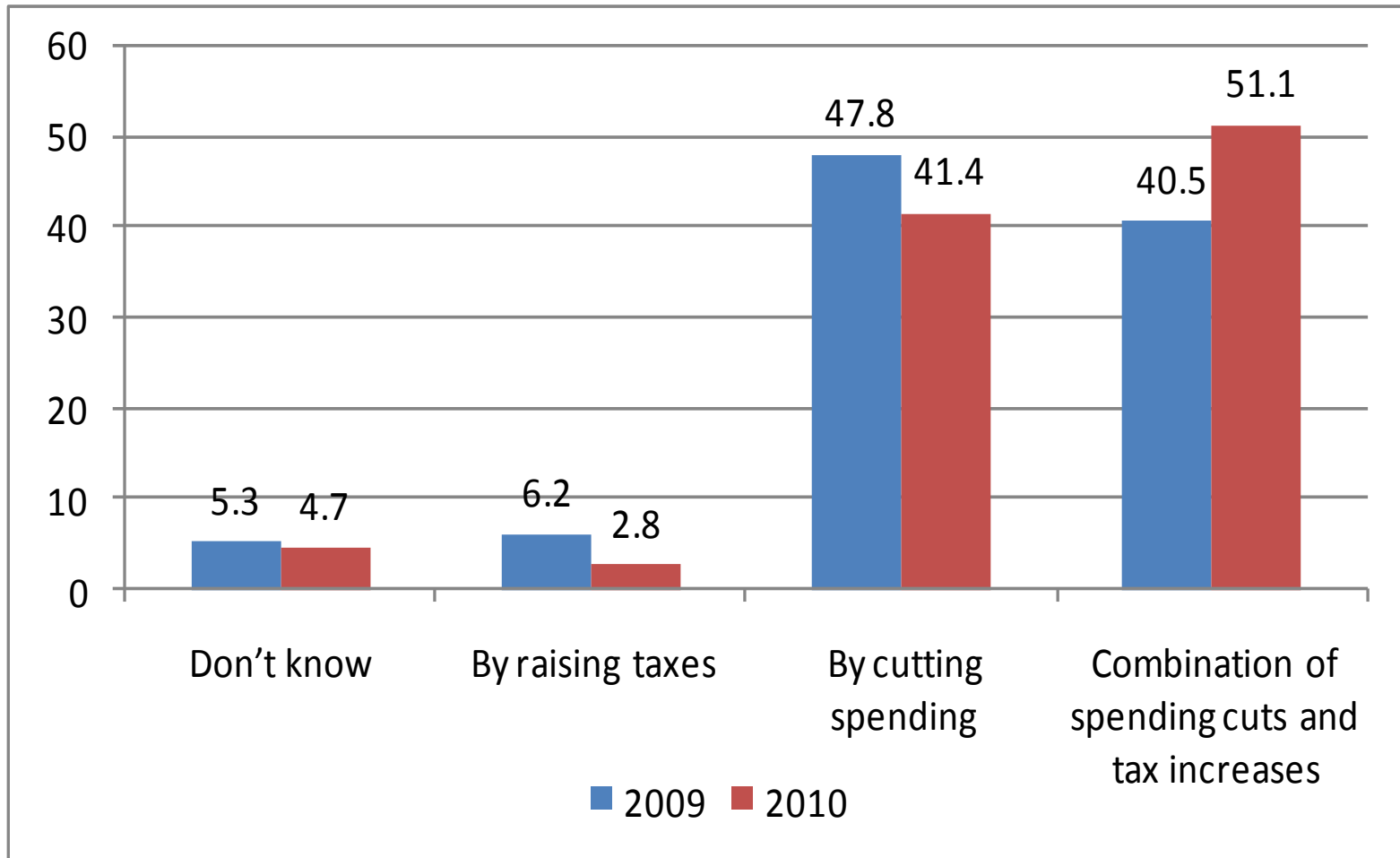
## PERCENT RATING STATE GOVERNMENT EFFORTS TO ATTRACT BUSINESS TO LOCAL COMMUNITY AS POOR



**STATE BUDGET  
POLITICS:  
SPENDING CUTS  
AND TAXES**

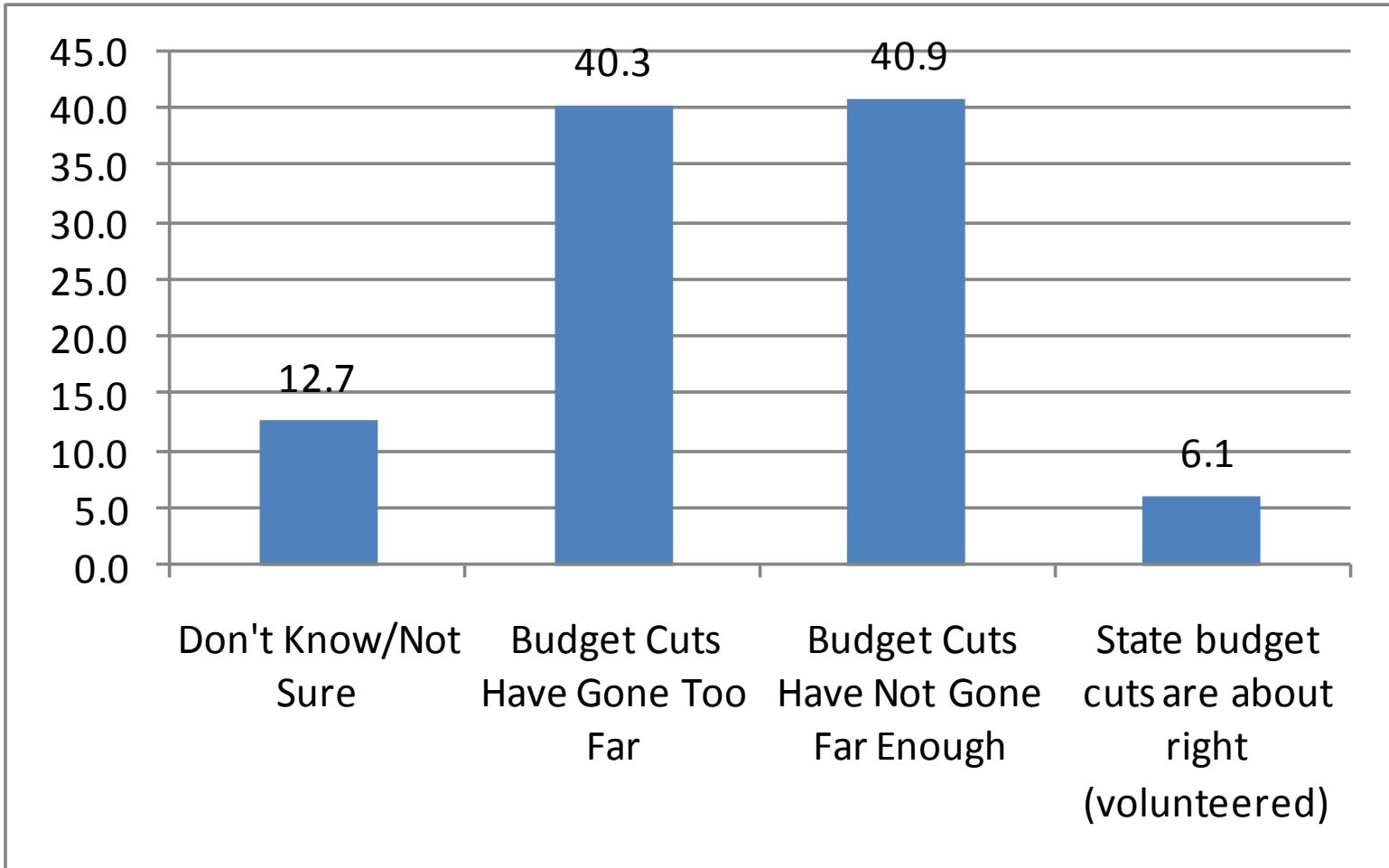


## PREFERENCES FOR ADDRESSING BUDGET SHORTFALL

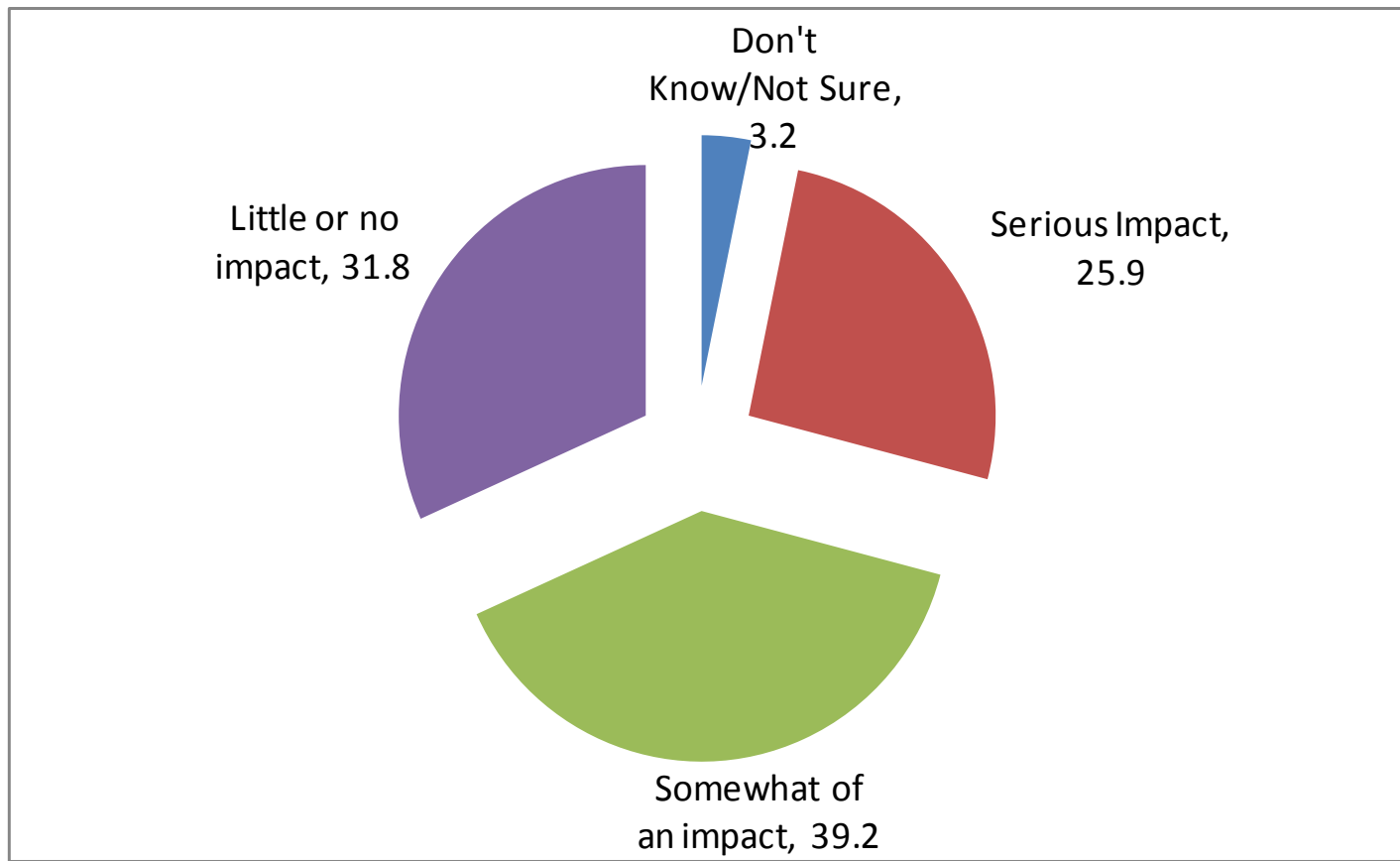




## PERCEPTION OF WHETHER STATE BUDGET CUTS HAVE GONE TOO FAR OR NOT FAR ENOUGH

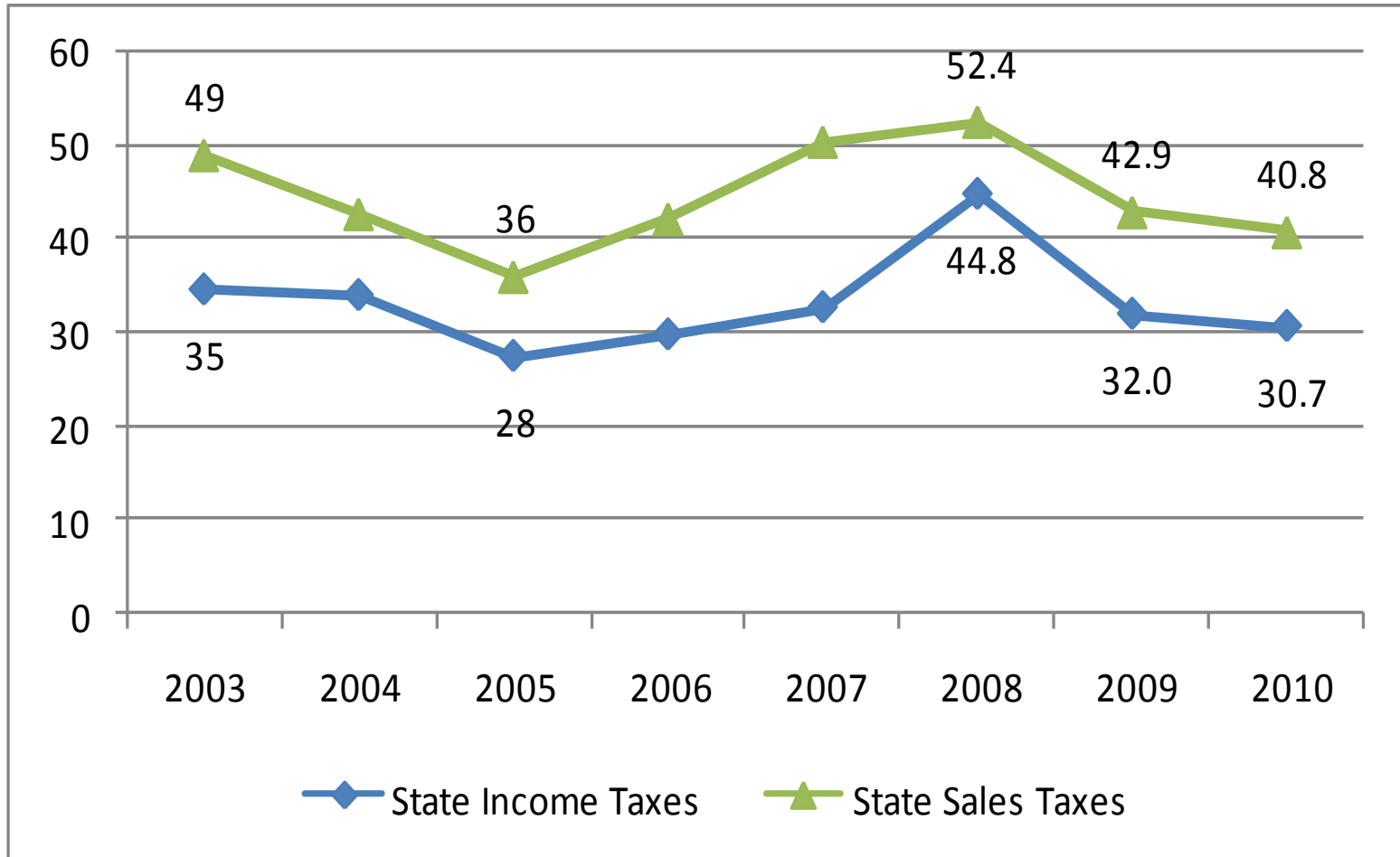


## PERCEPTIONS OF IMPACT OF BUDGET CUTS ON THE RESPONDENT AND THEIR LOCAL COMMUNITY



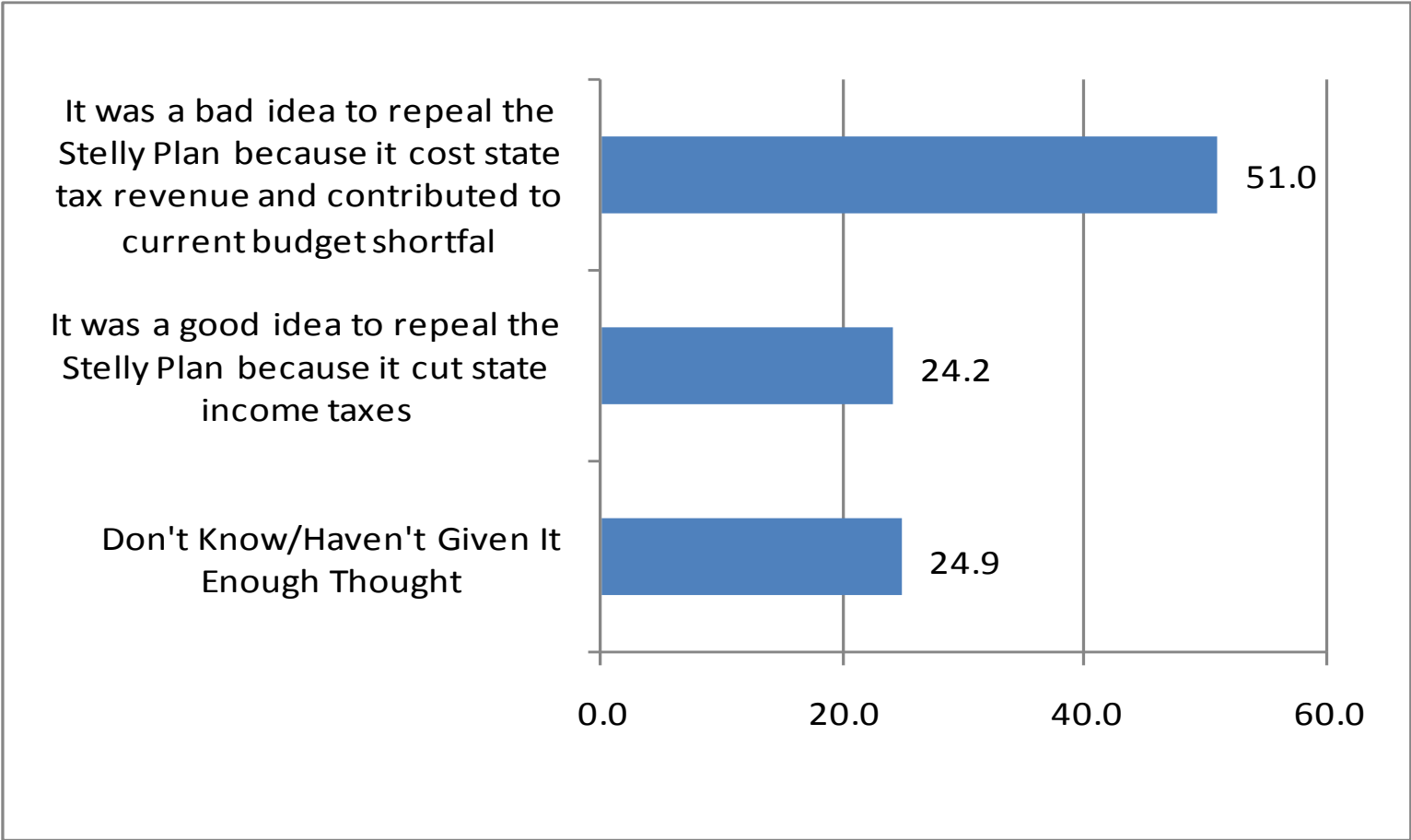


## PERCEPTIONS STATE INCOME AND SALES TAXES ARE TOO HIGH AND NEED TO BE REDUCED



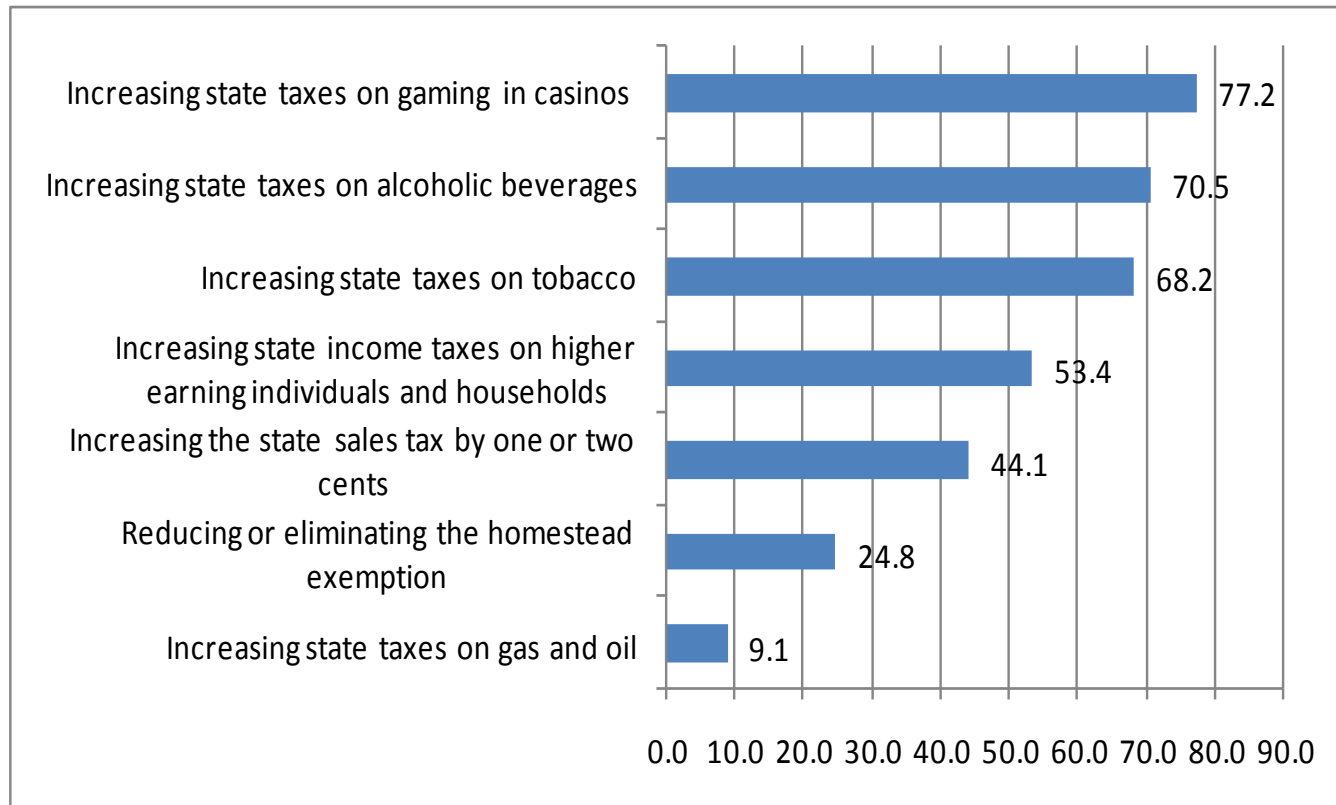


# PERCEPTIONS OF STELLY PLAN REPEAL: A GOOD IDEA OR A BAD IDEA?



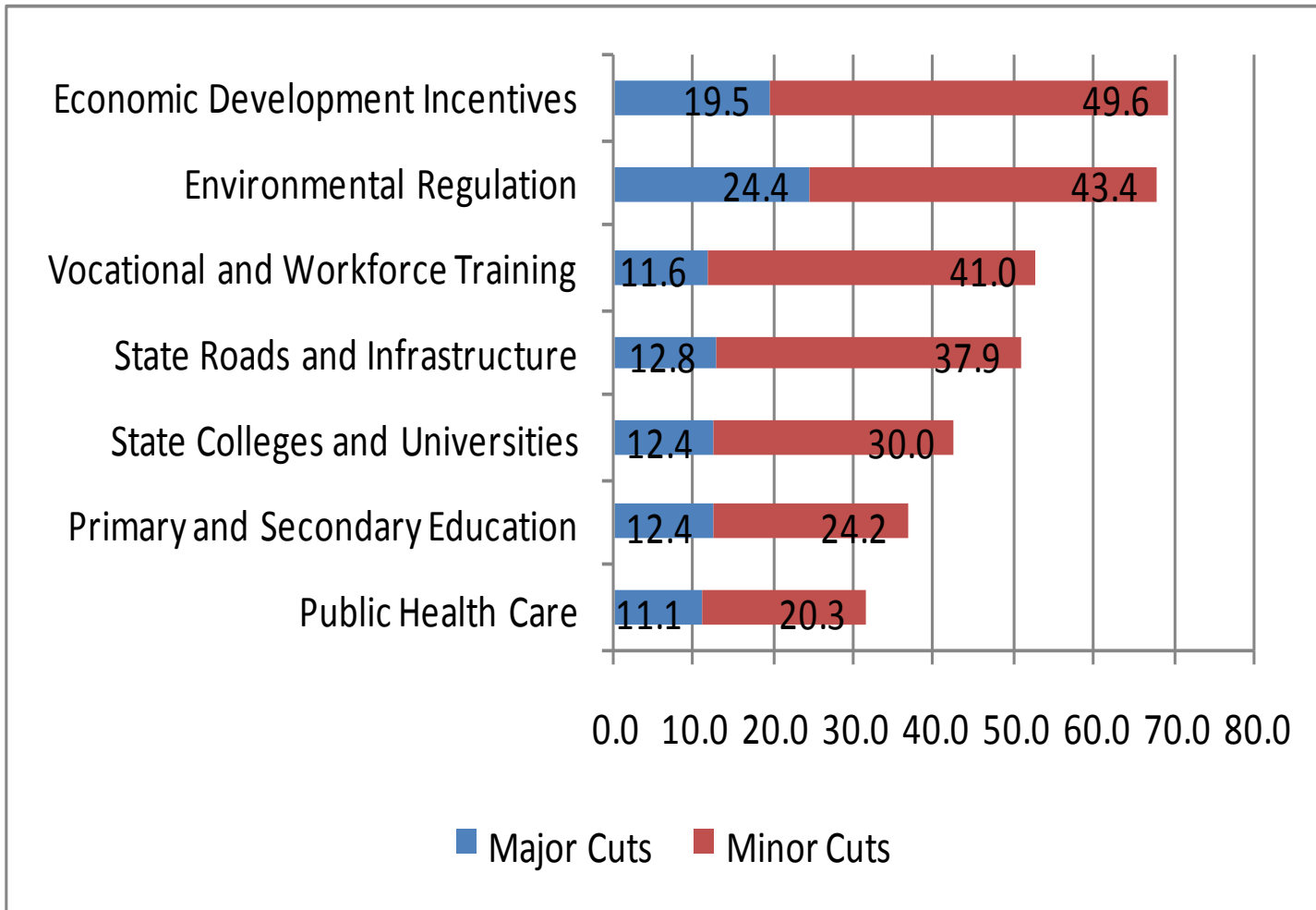


## CONTINGENT SUPPORT FOR TAX INCREASES





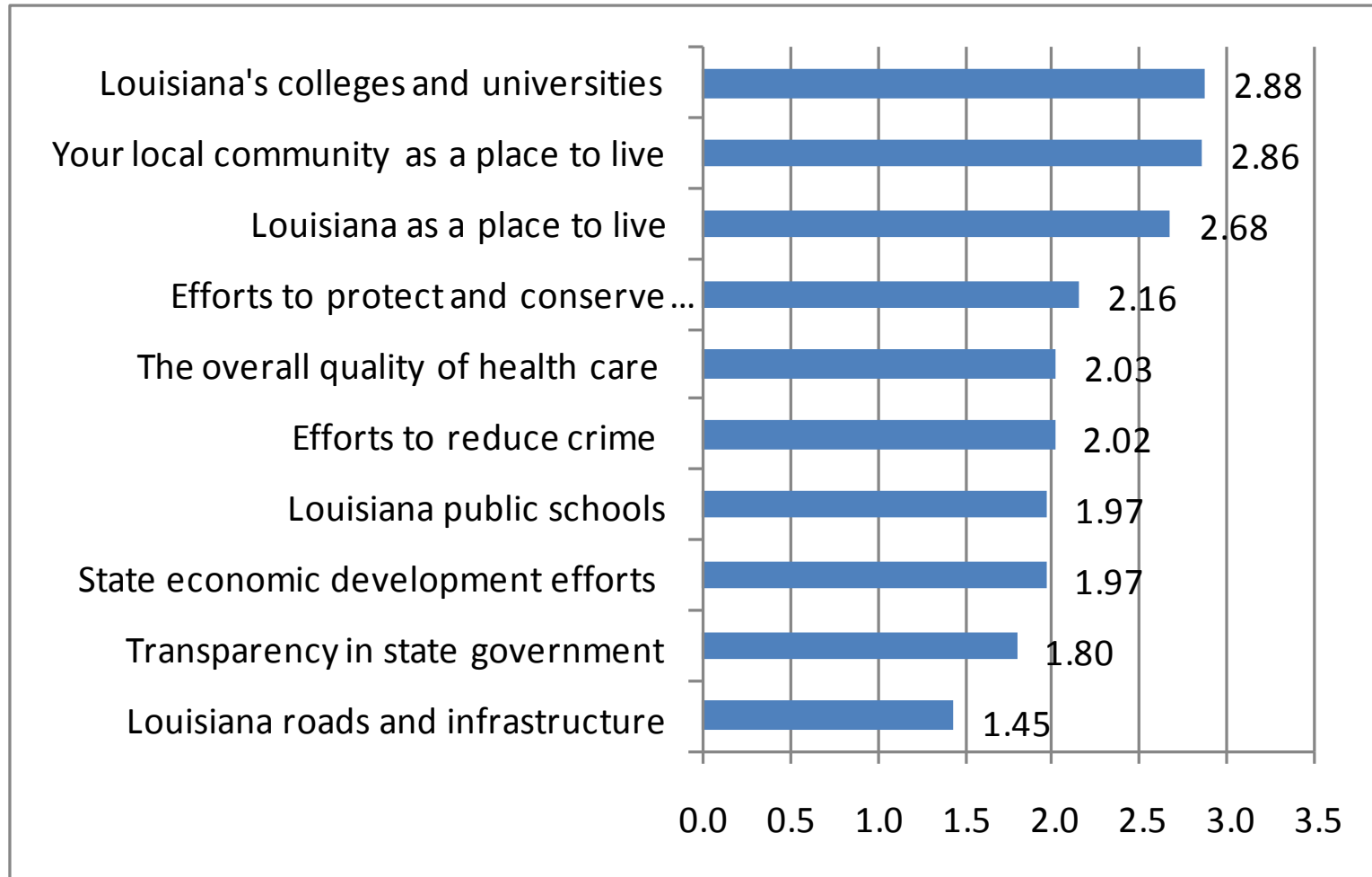
## UNWILLING TO WIELD THE STATE BUDGETARY AXE: RESPONDENT PREFERENCES FOR SPENDING CUTS



# HIGHER EDUCATION

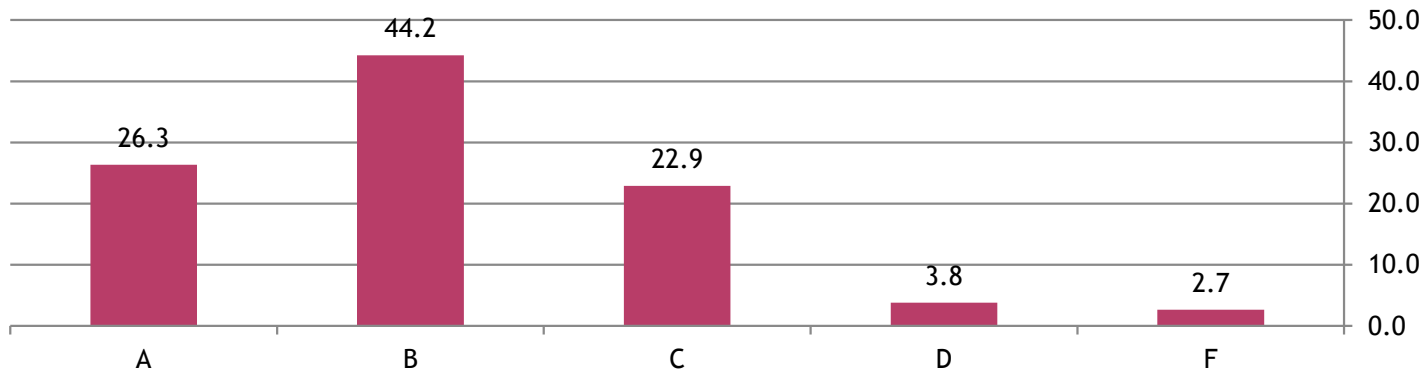


## GPA FOR VARIOUS AREAS OF STATE GOVERNMENT SERVICE AND PERFORMANCE

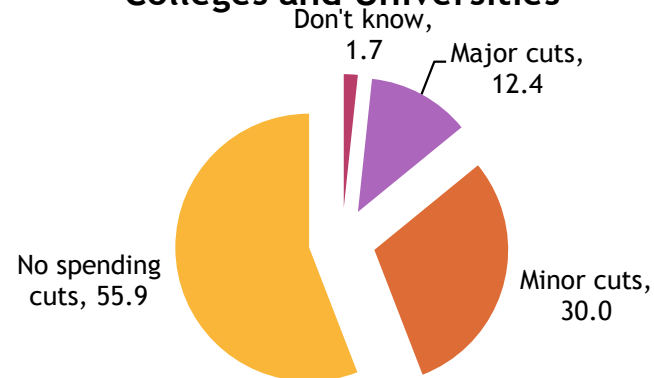


# PERCEPTIONS OF STATE COLLEGES AND UNIVERSITIES

## Grades for State Colleges and Universities

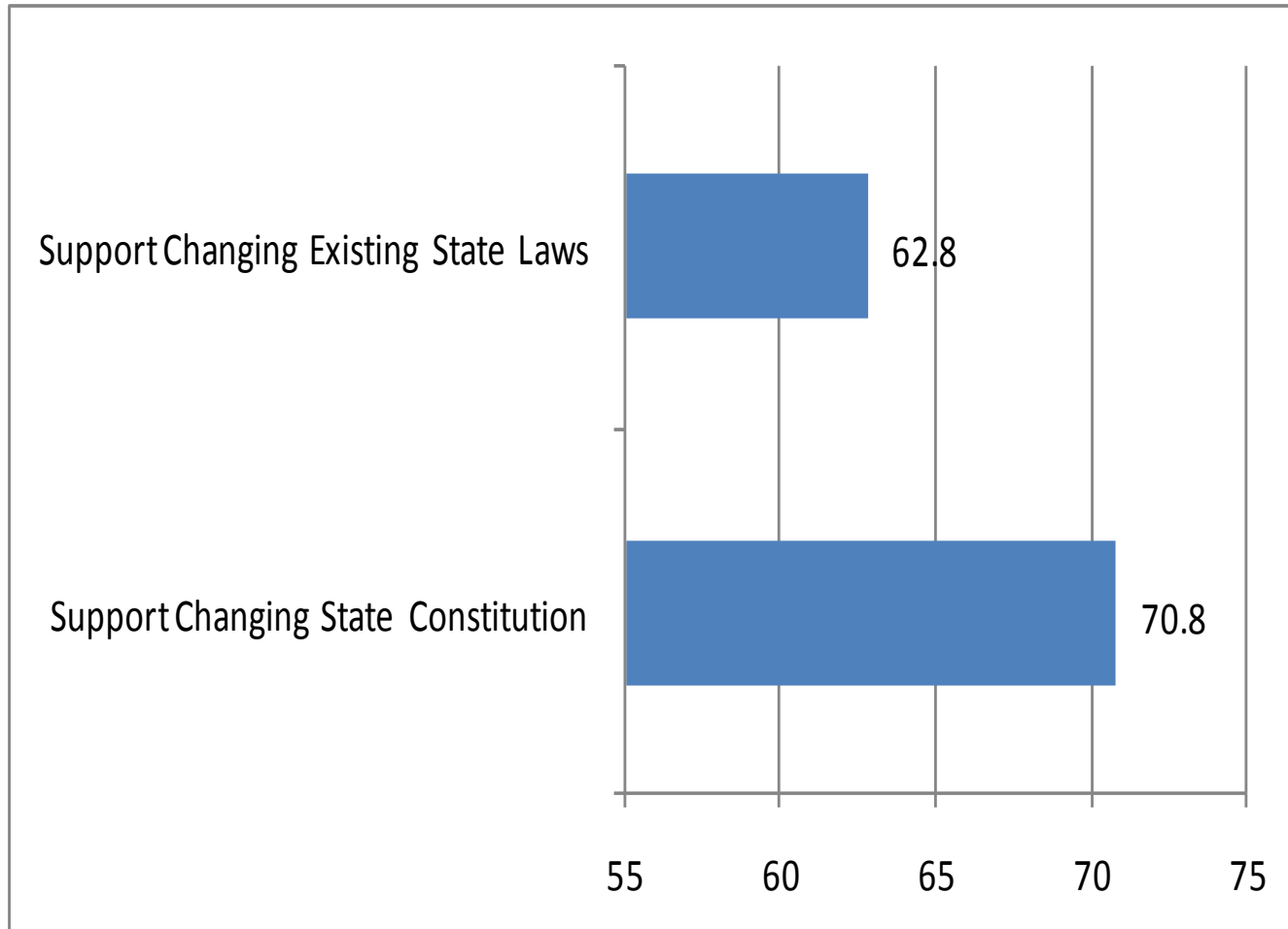


## Preferences for Spending Cuts to State Colleges and Universities

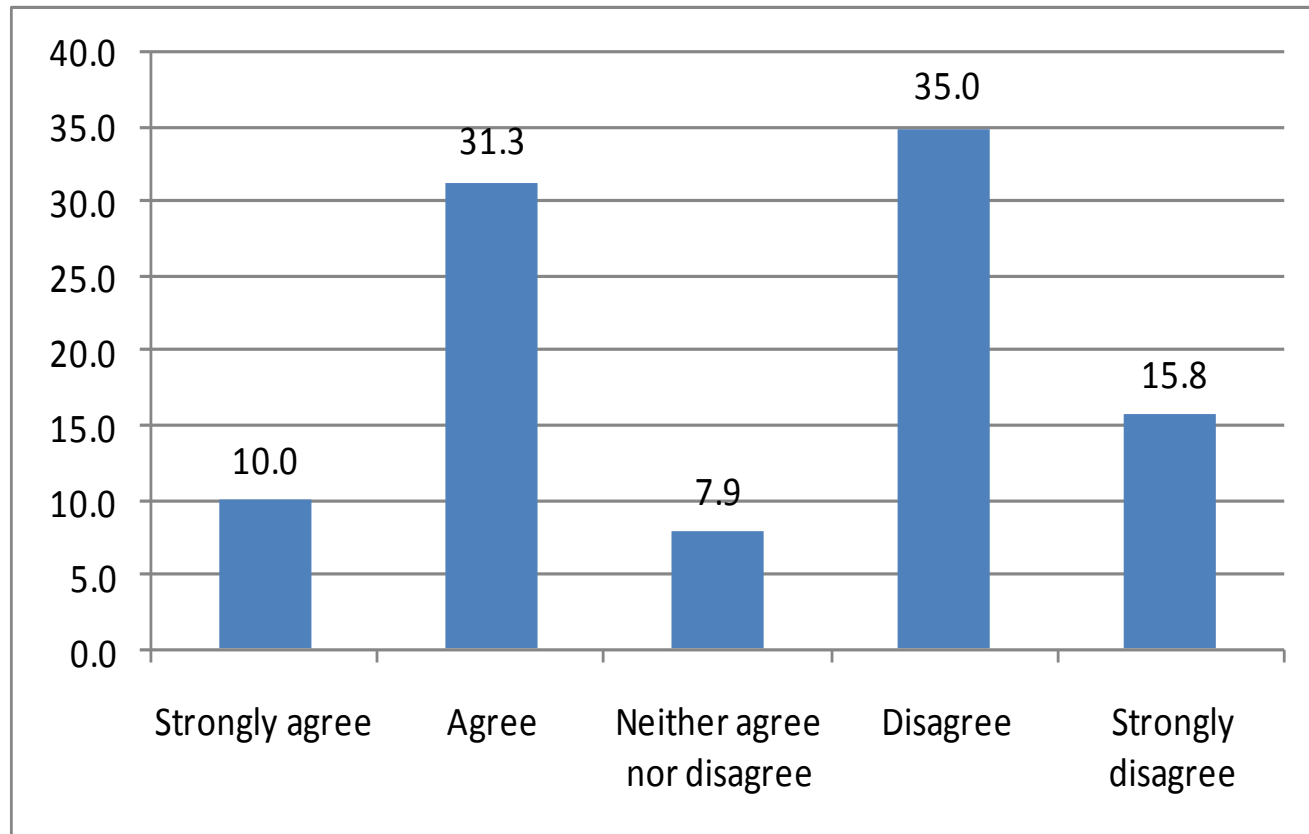




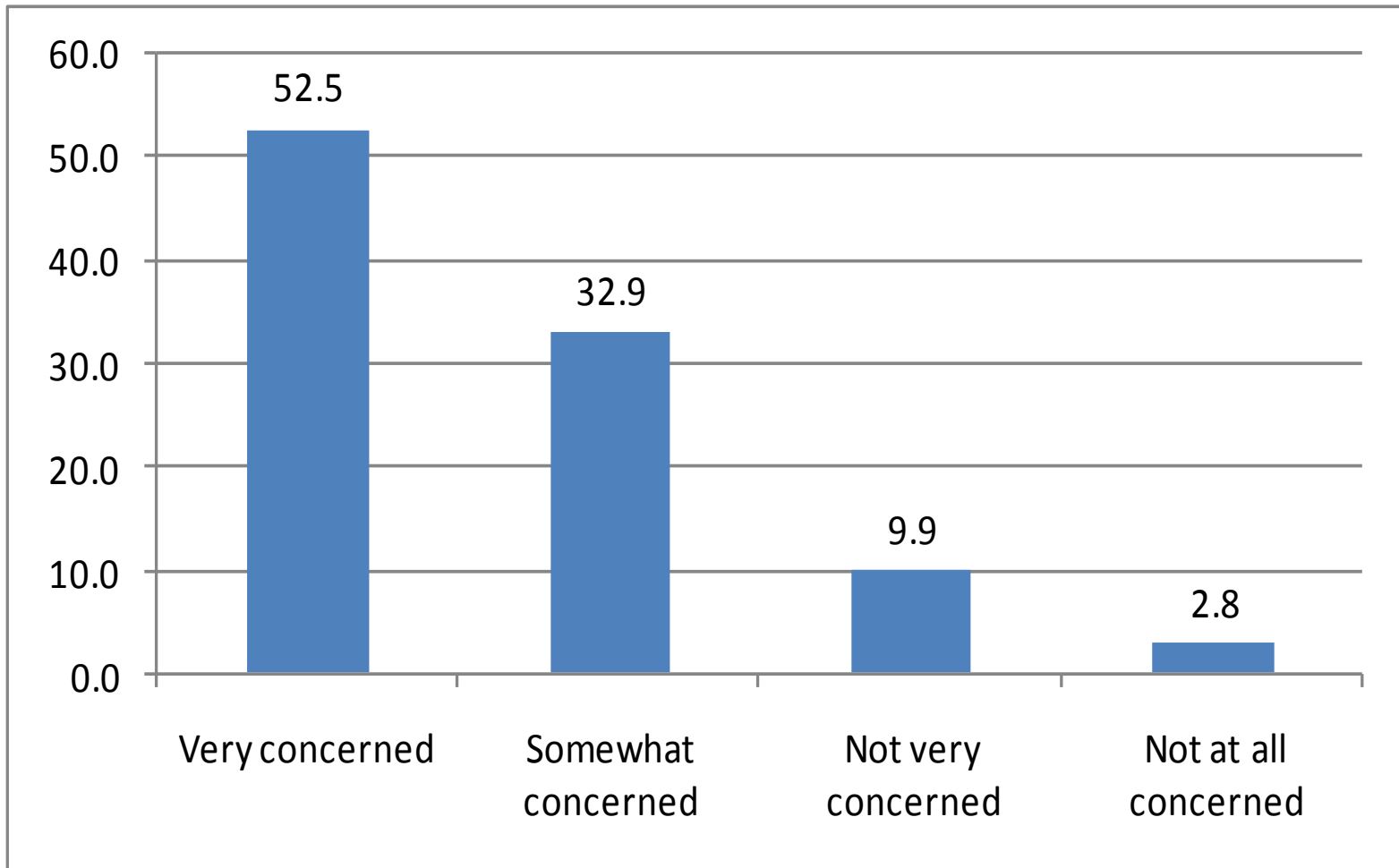
# SUPPORT FOR CHANGING STATE LAWS AND STATE CONSTITUTION SO BUDGET CUTS DO NOT COME PRIMARILY FROM HIGHER EDUCATION AND HEALTH CARE



## STATE COLLEGES AND UNIVERSITIES SHOULD BE ABLE TO RAISE TUITION AND FEES TO OFFSET BUDGET CUTS



## CONCERNS BUDGET CUTS WILL AFFECT THE OVERALL QUALITY OF ACADEMIC PROGRAMS

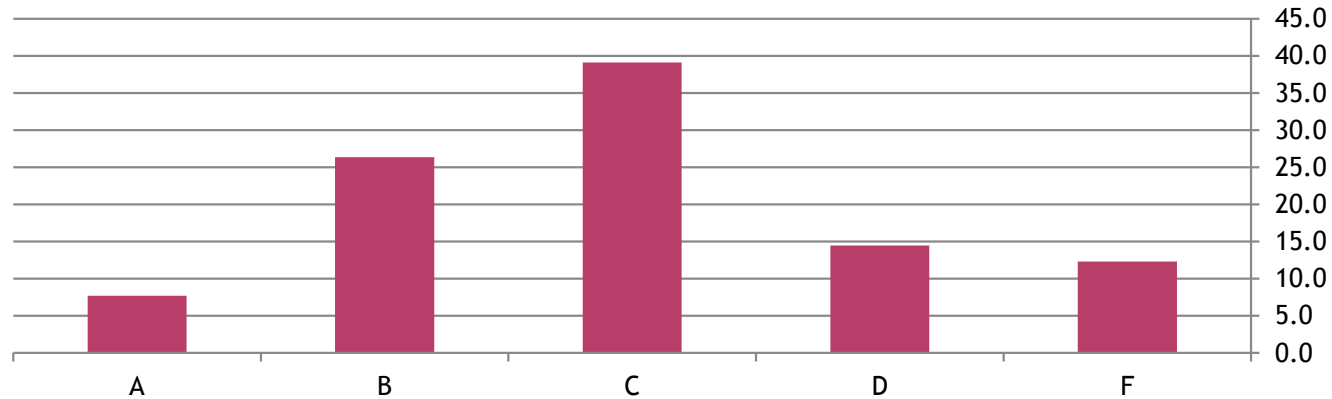


# HEALTH CARE

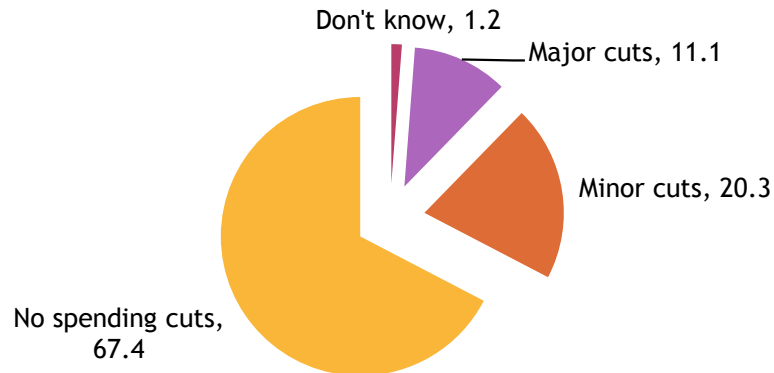


# PERCENT OF RESPONDENTS GRADING OVERALL QUALITY OF HEALTH CARE AS A D OR F

## Grades for overall quality of health care in Louisiana

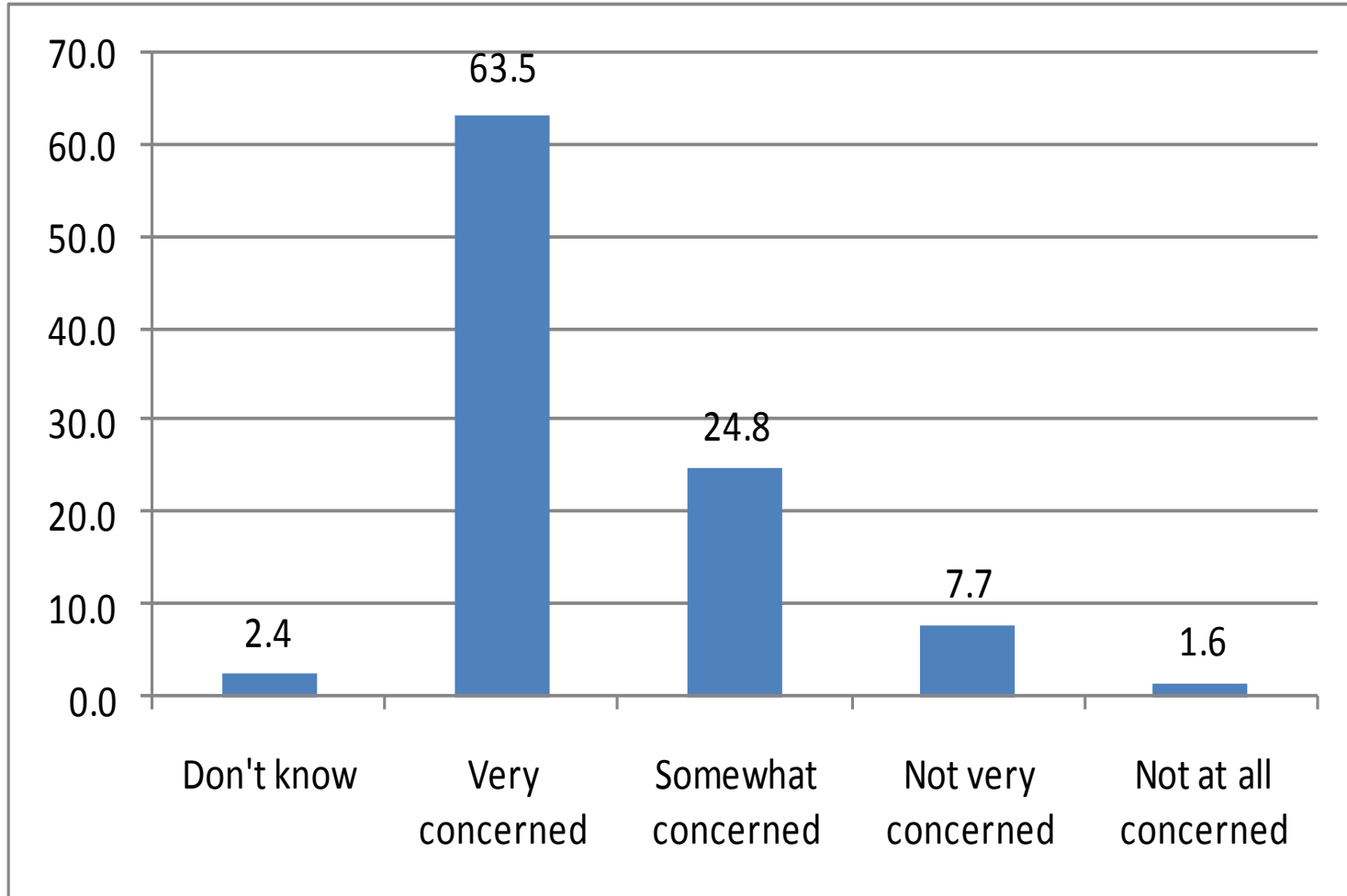


## Preferences for Spending Cuts to Health Care for Poor, Elderly and Disabled



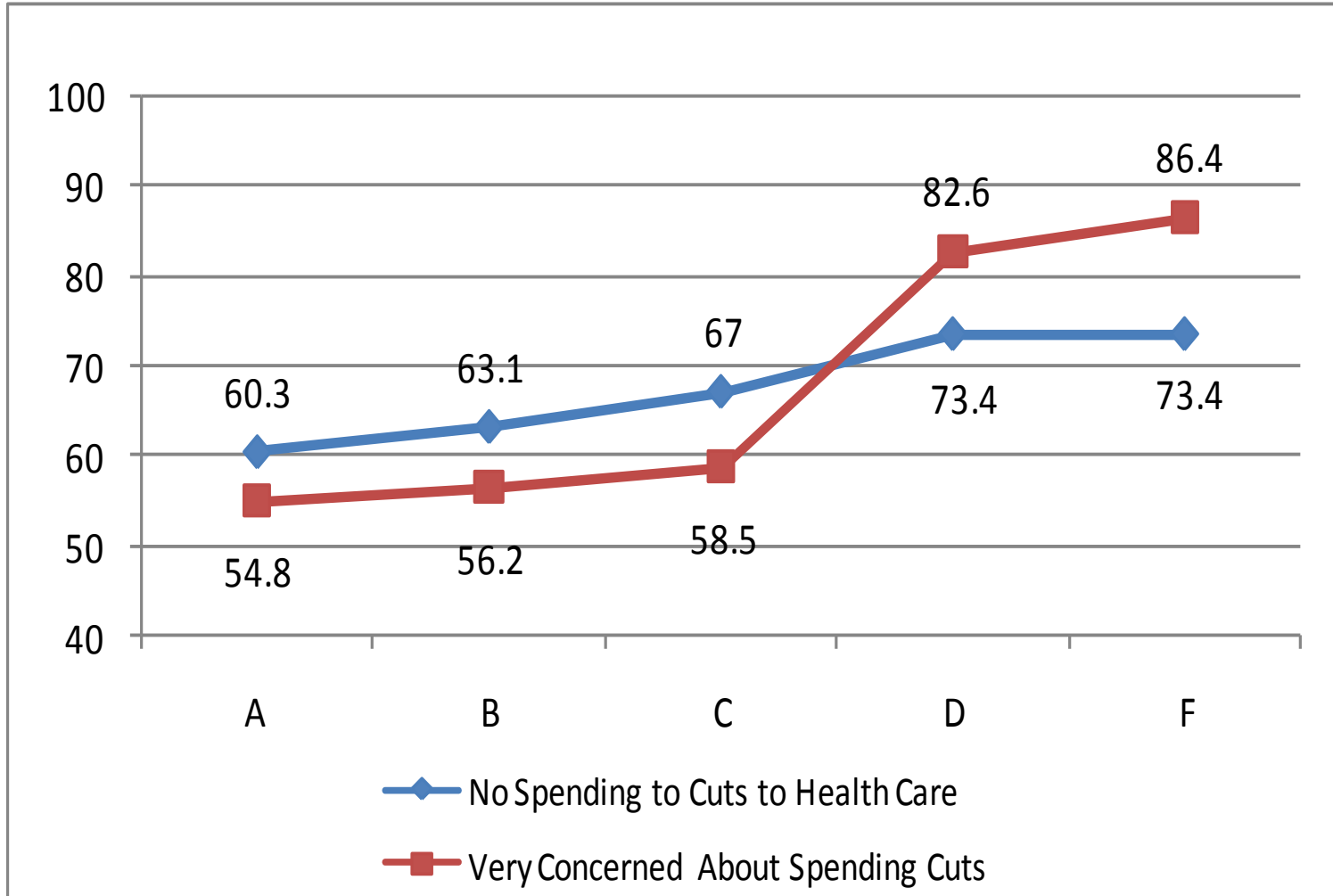


## CONCERN SPENDING CUTS WILL AFFECT THE OVERALL QUALITY OF PUBLIC HEALTH CARE IN LOUISIANA





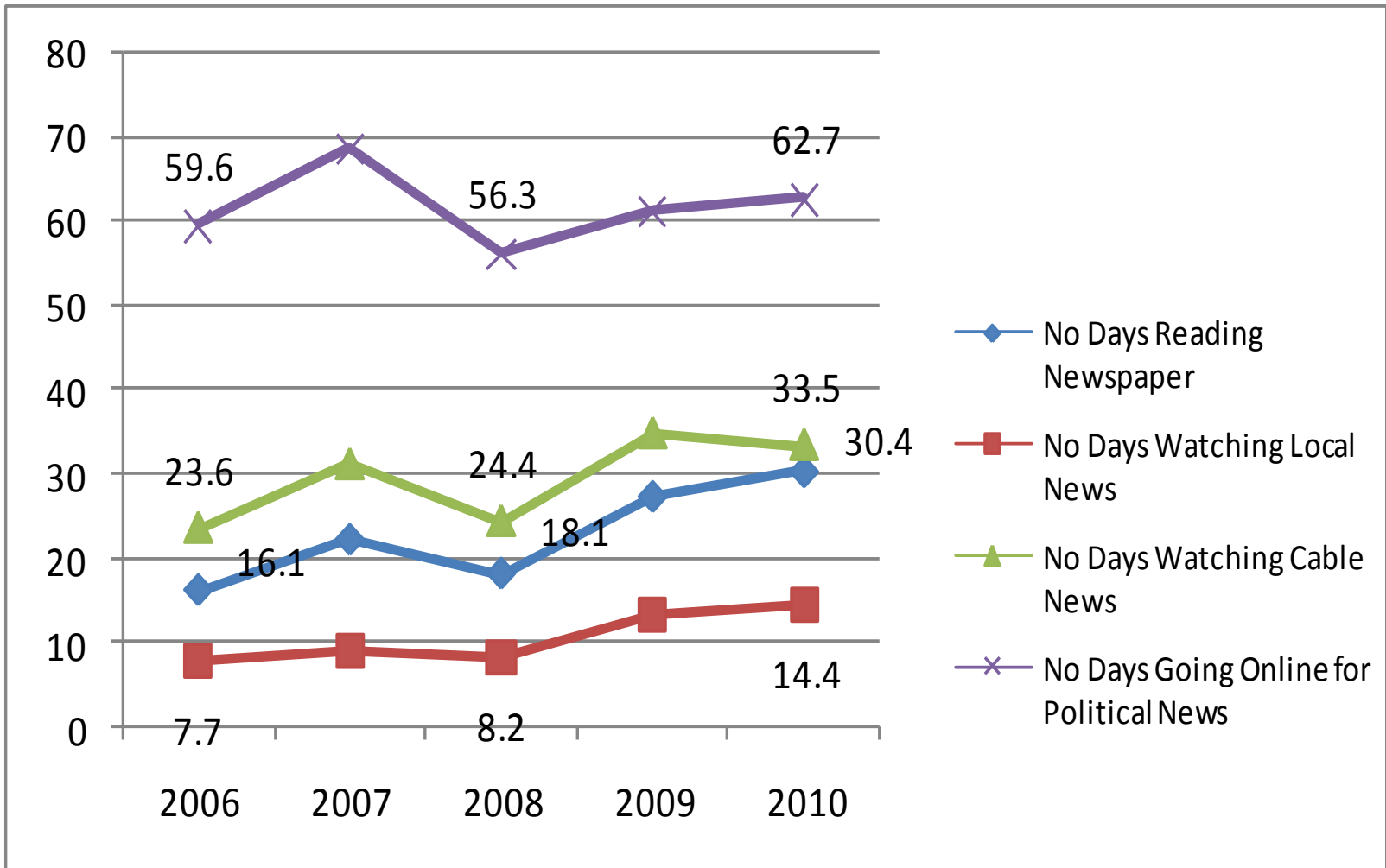
# IMPACT OF HEALTH CARE GRADES ON OPPOSITION AND CONCERN ABOUT SPENDING CUTS



**AN INFORMED  
PUBLIC & THE  
DECLINE OF  
TRADITIONAL MEDIA**

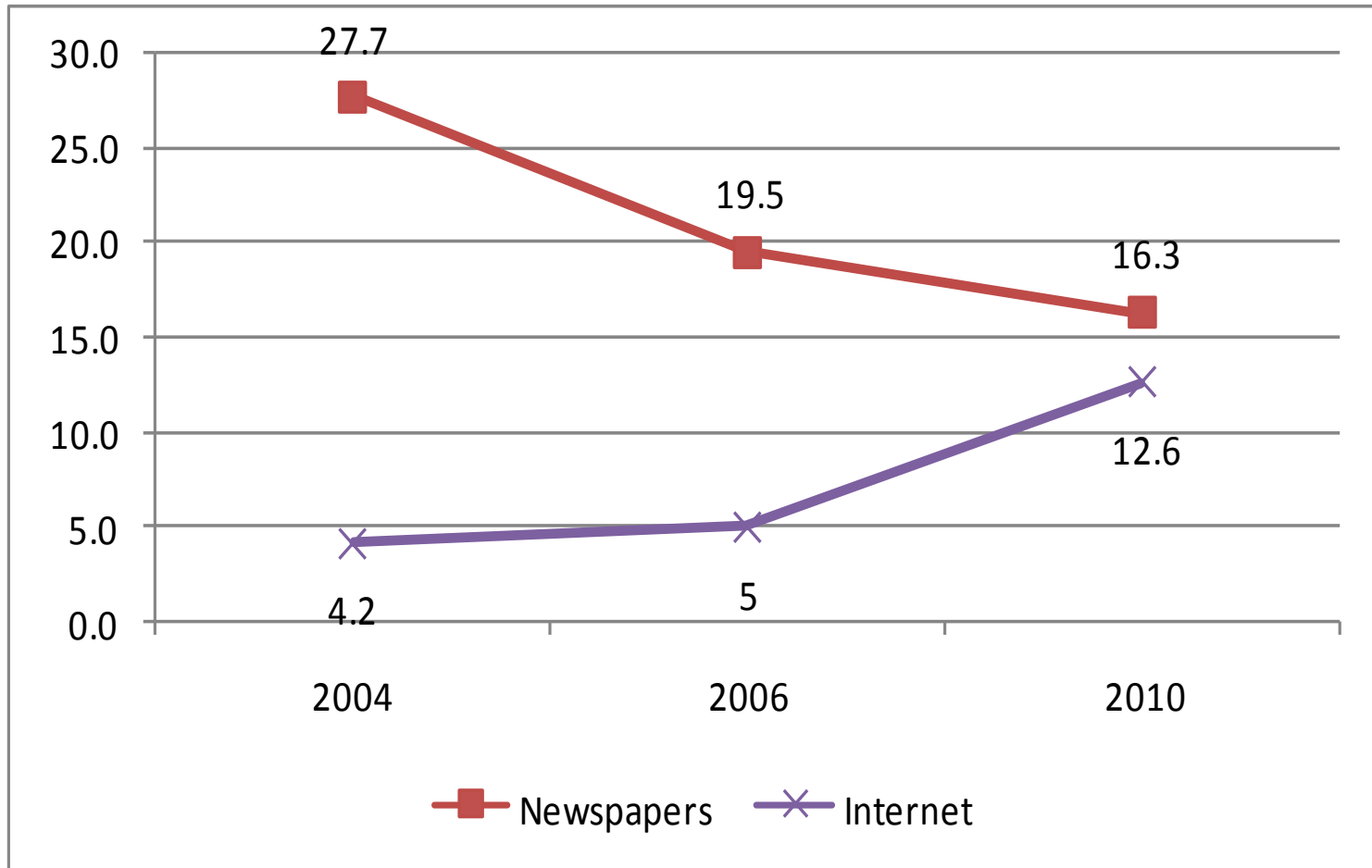


## PERCENT REPORTING NO DAYS IN PAST WEEK USING MEDIA SOURCE



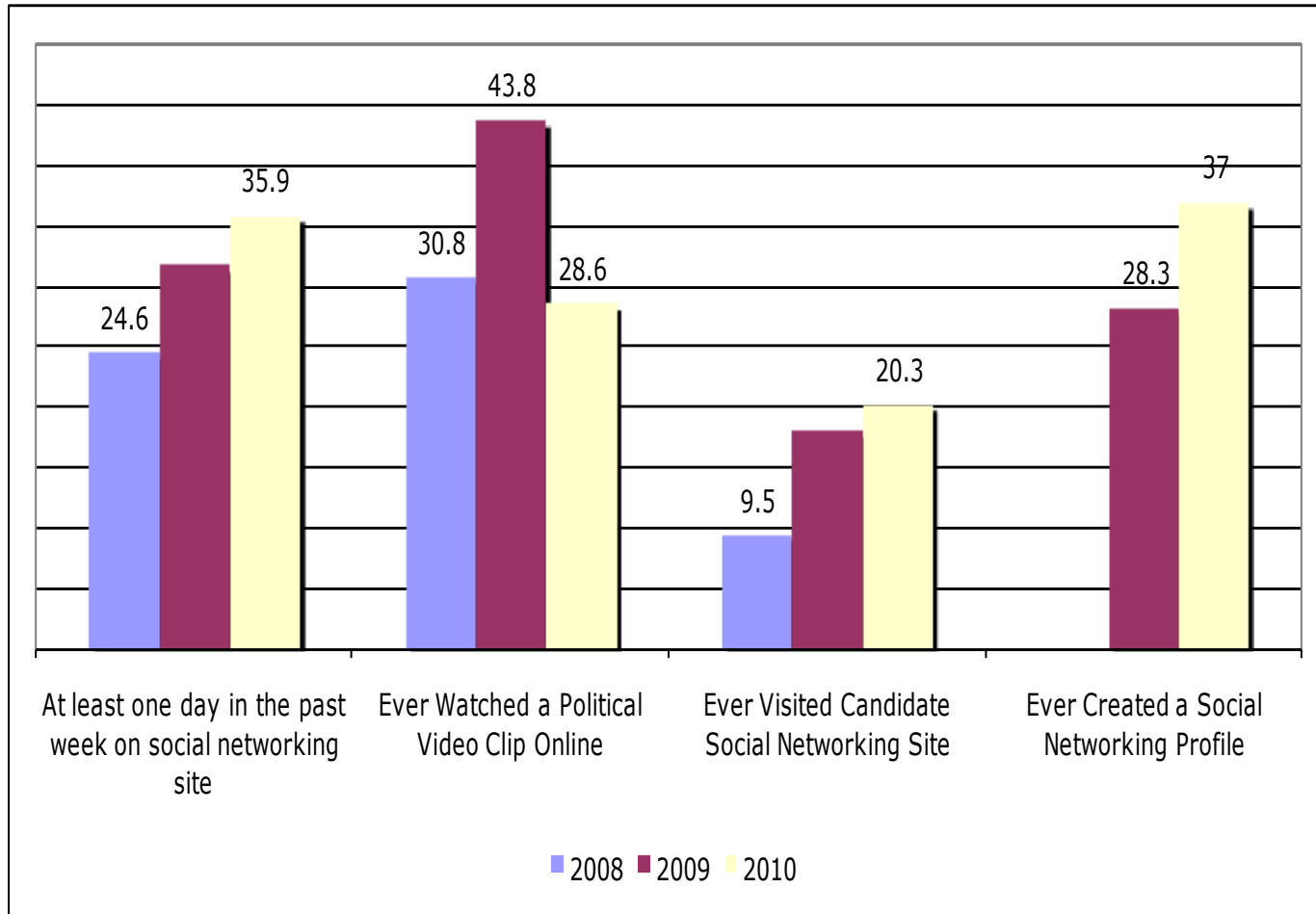


## PRIMARY SOURCE OF NEWS ABOUT LOUISIANA POLITICS AND PUBLIC AFFAIRS





## INCREASING USE OF NEW MEDIA



# LOUISIANA PUBLIC OPINION

- ◉ A New Era for Louisiana Politics OR a Return to Pre-Katrina “Normal”?
- ◉ The Limits of Public Opinion & the Leadership Gap
  - Contradictions
  - Ambivalence
  - “Politicians Don’t Pander”
- ◉ The Budgetary Cliff
  - Spending Versus Investment
  - Strategic Spending Cuts